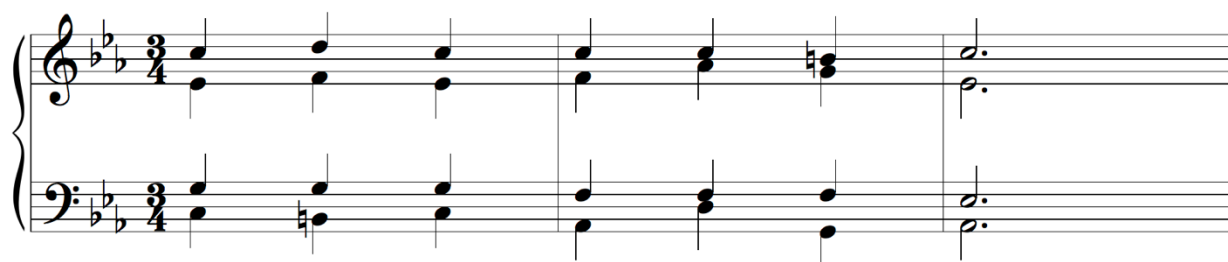
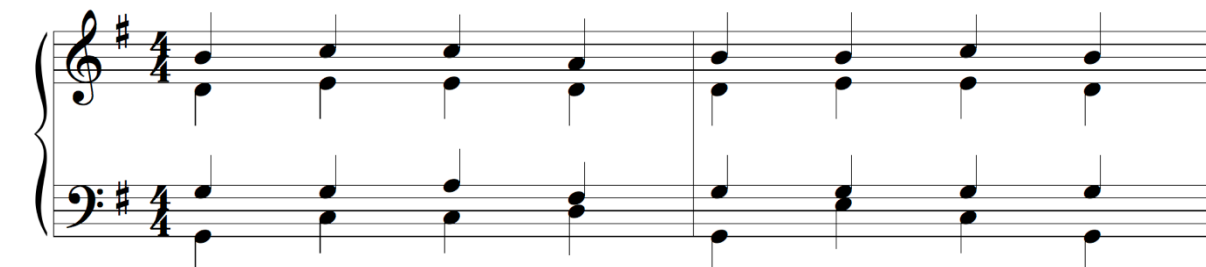


# Chpt. 9 Exercises Part 2

I. Provide a Roman numeral analysis, including figured bass. Identify the final cadence.



II. Provide Roman numerals that represent the cadences specified and notate the two chords.

Deceptive	Half	Perfect Authentic	Perfect Authentic
A: _____	D min: _____	B: _____	C: _____
Imperfect Authentic	Half	Imperfect Authentic	Perfect Authentic
D min: _____	G: _____	C min: _____	F min: _____

## Analysis

Composed by the last Hawaiian monarch Lili'uokalani in 1878, this song became a classic farewell song. After following along in the score while listening to the excerpt, answer the questions that follow the example.

Lili'uokalani, "Aloha Oe". Mm. 1-12

Moderato

5

Ha - a - heo ka u - a i - na pali Ke nihi a - e - la ka na -  
*Stolz zieht die Wol-ke über den Fels Und als sie durch die Bäu - me*  
Proud-ly swept the rain by the cliffs As on it gli - ded through the

hele E ha - ha - i ana — i ka "liko" Pu - a  
*schwebt Folgt mit Trau - er ihr die ka "liko" Die —*  
trees Still foll' - wing ev - er the "liko," The

A - hi - hi le - hu - a o uka  
*A - hi - hi le - hu - a des Thals*  
A - hi - hi le - hu - a of the Vale

1. Analyze the chords with both lead sheet symbols and Roman numerals.

2. Provide a phrase analysis, including cadences and melodic motives. Is there a periodic structure to this verse? If so, explain.